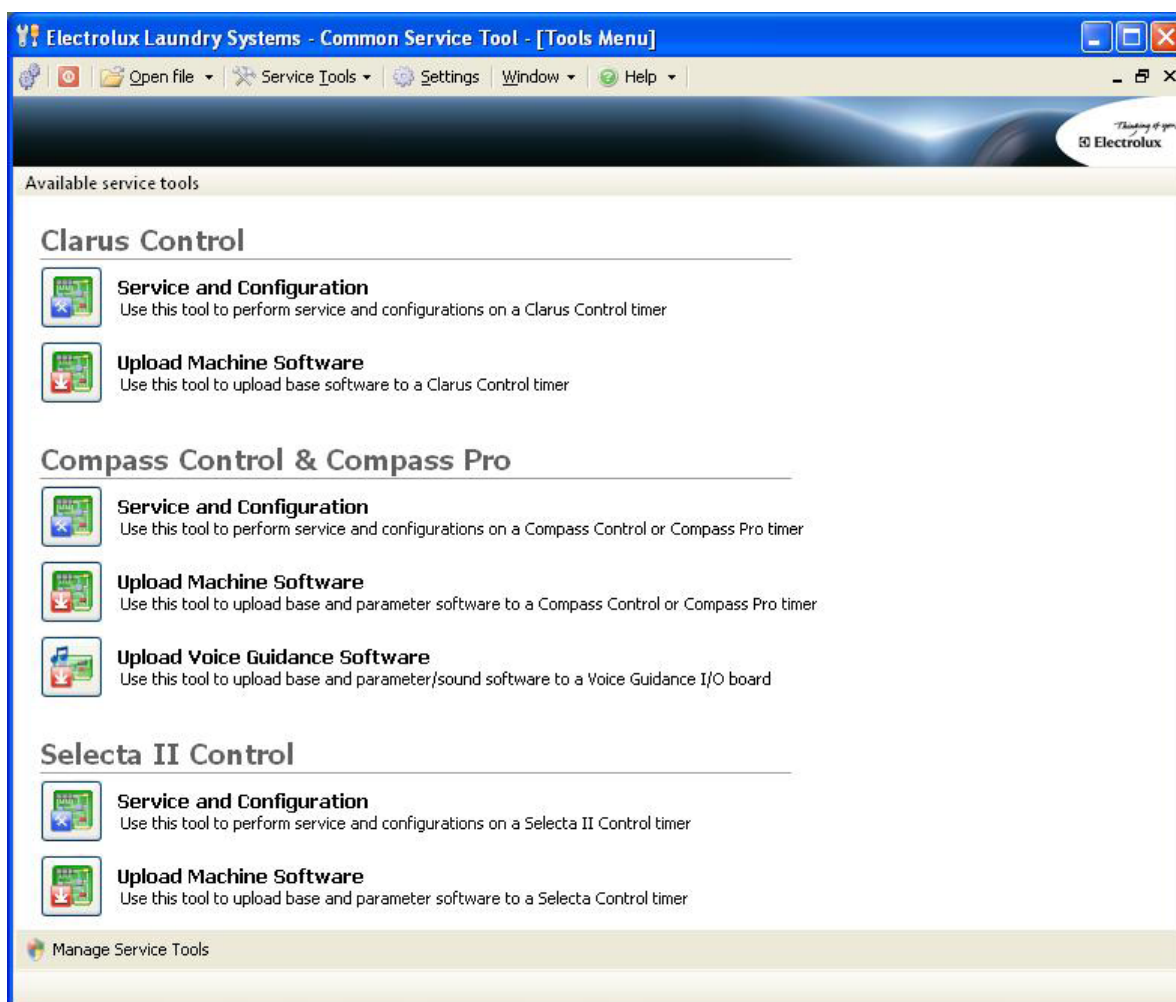


# ELS Common Service Tool (CST)



## Features and benefits

One software for all service needs!

- Electrolux Professionals Common Service Tool (CST) is a modularized platform for different product categories
- CST supports Clarus Control, Compass Control, Compass Pro and Selecta II / Selecta Control
- CST consists of one general executable file with separate plug in modules that could be developed and launched depending on the need
- CST contains Plug in modules for all normal service needs, including uploading software and functionality for service modules

## Technical specification

Description	Product No	Description/content
CST kit	988 8022-55	Software, null modem cable, Adapter for Compass/ Selecta II control, Adapter for Clarus Control, USB cable for Compass Pro. Software available in partner 's area for download.

## System requirements

### PC

Intel Pentium compatible, 900MHz or better  
Microsoft Windows Win XP (x86), Windows Vista (x86/x64),  
Windows 7 / 8 / 10 (x86 / x64)  
Windows Explorer 6.0 or higher  
40 MB Free Hard disk space (80 MB recommended).  
(Excluding hard disk space required for software that should be  
uploaded into control units)  
Windows Compatible Mouse  
1 free serial RS232 port (must be able to run with 115 200 bps)  
1 free USB port (Compass Pro only)

### Information

For more information and for access to the latest software releases,  
we refer you to: our partners' area at [electroluxprofessional.com](http://electroluxprofessional.com)

### Note!

New laptops might not be equipped with the required free RS232 serial port as standard.  
Many solutions to get a serial port are available, but Electrolux recommends a robust solution  
like a Serial PC or Serial CF card. Solutions with USB – RS232 converters are not always reliable.  
Contact your local IT help desk or local computer store for help and installation.